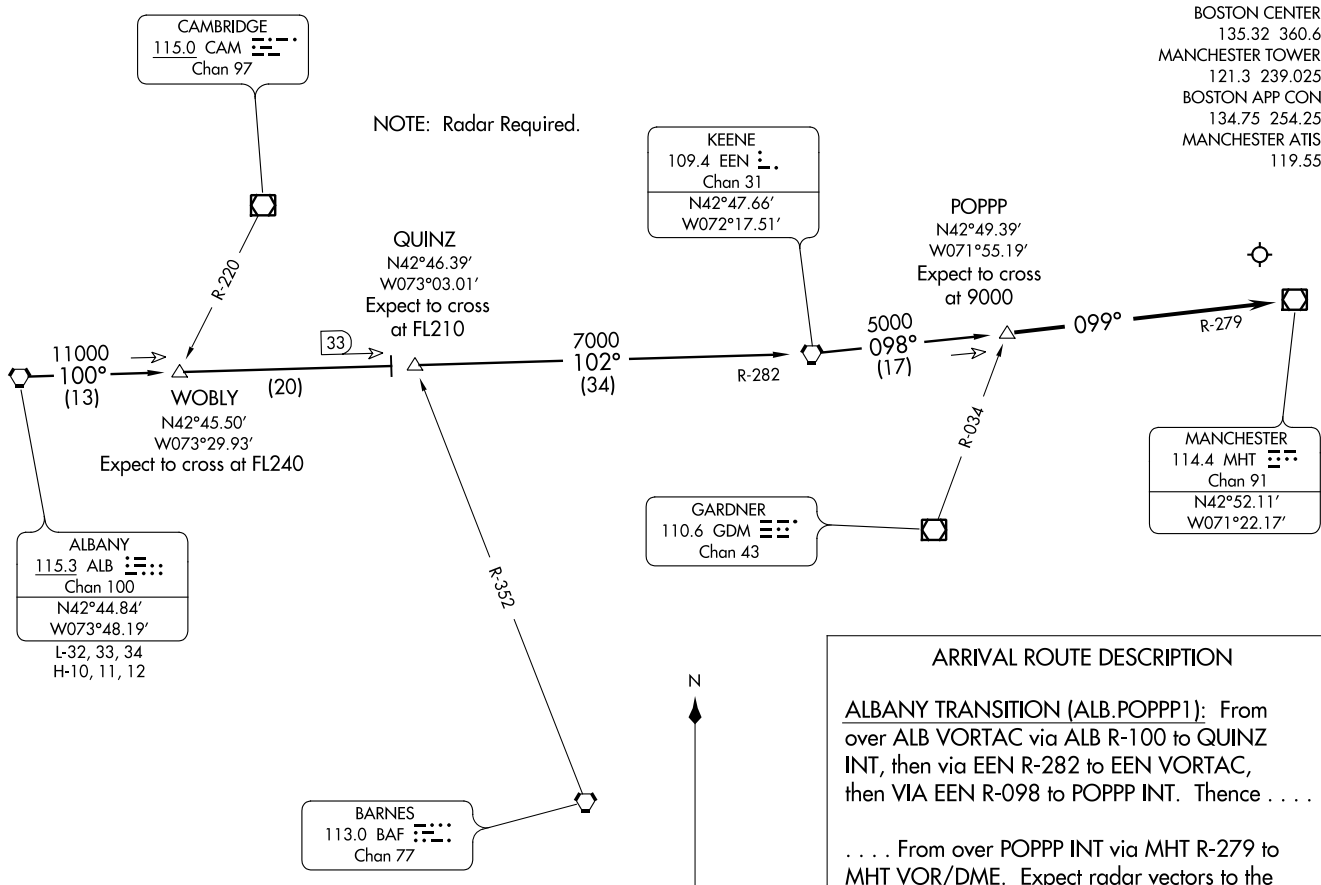


BOSTON CENTER
135.32 360.6
MANCHESTER TOWER
121.3 239.025
BOSTON APP CON
134.75 254.25
MANCHESTER ATIS
119.55

ST-246 (FAA)

MANCHESTER
MANCHESTER, NEW HAMPSHIRE

NOTE: Radar Required.



ARRIVAL ROUTE DESCRIPTION

ALBANY TRANSITION (ALB.POPPP1): From over ALB VORTAC via ALB R-100 to QUINZ INT, then via EEN R-282 to EEN VORTAC, then VIA EEN R-098 to POPPP INT. Thence . . .

. . . From over POPPP INT via MHT R-279 to MHT VOR/DME. Expect radar vectors to the final approach course, prior to MHT VOR/DME.

NOTE: Chart not to scale.



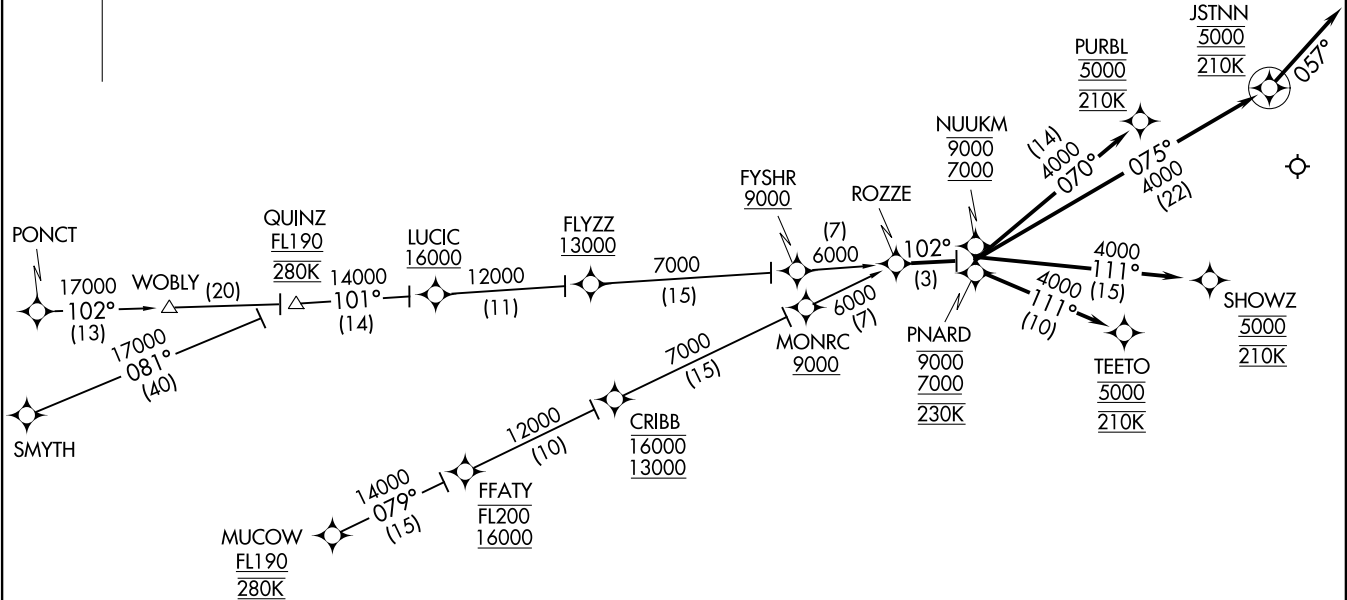
ROZZE TWO ARRIVAL (RNAV)
(ROZZE,ROZZE2) 17AUG17

MANCHESTER, NEW HAMPSHIRE
(MHT)



NOTE: RADAR required.
NOTE: RNAV 1.
NOTE: DME/DME/IRU or GPS required.
NOTE: Turbojet aircraft only.
NOTE: MUCOW and CRIBB transitions are ATC assigned.

BOSTON CENTER
135.32 360.6
BOSTON APP CON
124.9 269.075
MANCHESTER TOWER
121.3 239.025
MANCHESTER ATIS
119.55



NOTE: Chart not to scale.

(NARRATIVE ON FOLLOWING PAGE)

(ROZZE,ROZZE2) 17Z29
ROZZE TWO ARRIVAL (RNAV)

AL-246 (FAA)

MANCHESTER, NEW HAMPSHIRE
(MHT)

ARRIVAL ROUTE DESCRIPTION

CRIBB TRANSITION (CRIBB.ROZZE2)

MUCOW TRANSITION (MUCOW.ROZZE2)

PONCT TRANSITION (PONCT.ROZZE2)

QUINZ TRANSITION (QUINZ.ROZZE2)

SMYTH TRANSITION (SMYTH.ROZZE2)

Landing Rwy 6: From ROZZE on track 102° to cross PNARD between 7000 and 9000 and at 230K, then on track 111° to cross TEETO at 5000 and at 210K. Expect ILS or LOC Rwy 6 or radar vectors to final approach course.

Landing Rwy 17: From ROZZE on track 102° to cross NUUKM between 7000 and 9000, then on track 070° to cross PURBL at 5000 and at 210K. Expect RNP approach or ILS or LOC/DME Rwy 17 or radar vectors to final approach course.

Landing Rwy 24: From ROZZE on track 102° to cross NUUKM between 7000 and 9000, then on track 075° to cross JSTNN at 5000 and at 210K, then on heading 057°. Expect radar vectors to final approach course.

Landing Rwy 35: From ROZZE on track 102° to cross NUUKM between 7000 and 9000, then on track 111° to cross SHOWZ at 5000 and at 210K. Expect RNP approach or ILS or LOC Rwy 35 or radar vectors to final approach course.

NE-1, 09 NOV 2017 to 07 DEC 2017

NE-1, 09 NOV 2017 to 07 DEC 2017