

SAN ANTONIO DEP CON
125.1 307.0

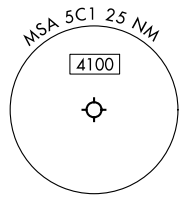
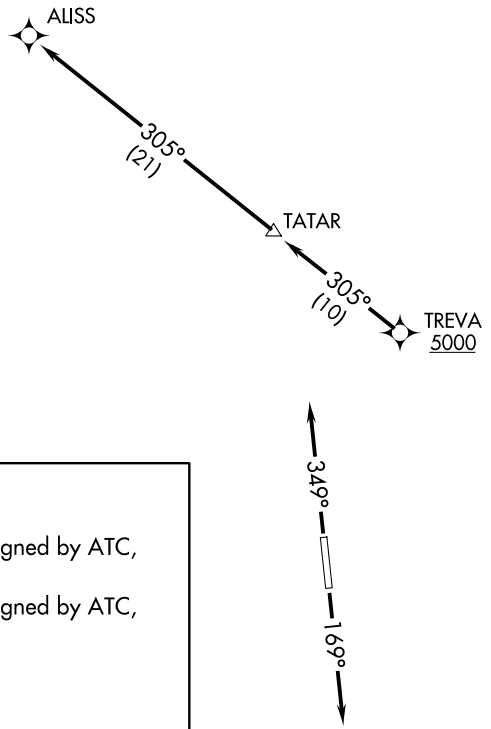
TOP ALTITUDE:
ASSIGNED BY ATC

RNAV 1 - GPS.
RADAR required.

SC-3, 22 FEB 2024 to 21 MAR 2024



NOTE: Chart not to scale.



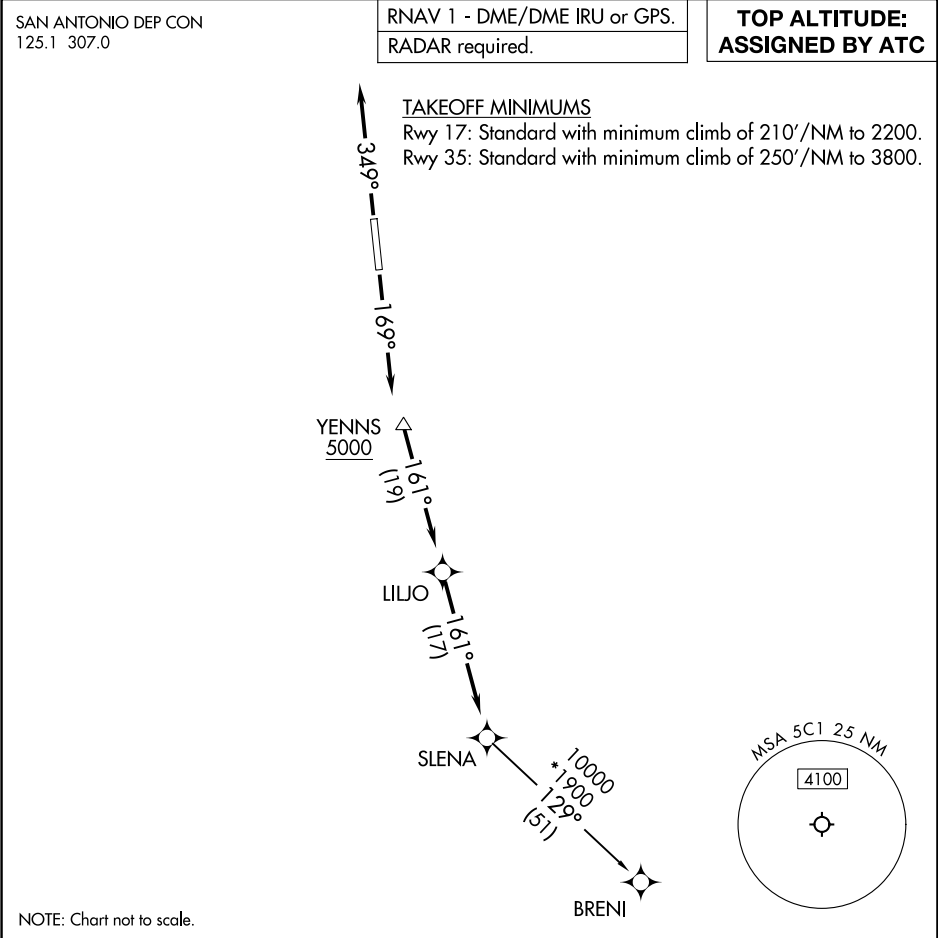
TAKEOFF MINIMUMS

Rwy 17: Standard with minimum climb of 210'/NM to 2200.
Rwy 35: Standard with minimum climb of 250'/NM to 3800.



DEPARTURE ROUTE DESCRIPTION

TAKEOFF RUNWAY 17: Climb on heading 169° or as assigned by ATC,
for vectors to TREVA, thence . . .
TAKEOFF RUNWAY 35: Climb on heading 349° or as assigned by ATC,
for vectors to TREVA, thence . . .
... on track 305° to TATAR, then on track 305° to ALISS.
Maintain ATC assigned altitude.



T

DEPARTURE ROUTE DESCRIPTION

TAKEOFF RUNWAY 17: Climb on heading 169° or as assigned by ATC, for vectors to YENNS, thence

TAKEOFF RUNWAY 35: Climb on heading 349° or as assigned by ATC, for vectors to YENNS, thence

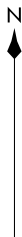
. . . . on track 161° to LILJO, then on track 161° to SLENA, then on transition.

Maintain ATC assigned altitude.

BRENI TRANSITION (SLENA1.BRENI)

SNDR ONE DEPARTURE (RNAV)
(SNDR1.SNDR) 25JAN24

SAN ANTONIO DEP CON
125.1 307.0



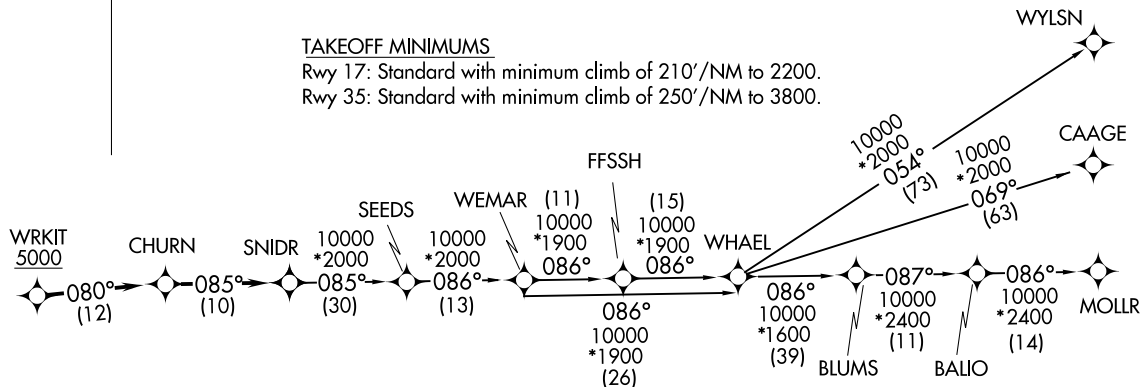
RNAV 1 - DME/DME IRU or GPS.
RADAR required.

TOP ALTITUDE:
ASSIGNED BY ATC

TAKEOFF MINIMUMS

Rwy 17: Standard with minimum climb of 210'/NM to 2200.

Rwy 35: Standard with minimum climb of 250'/NM to 3800.



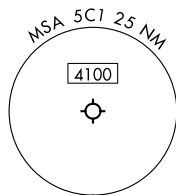
DEPARTURE ROUTE DESCRIPTION

TAKEOFF RUNWAY 17: Climb on heading 169° or as assigned by ATC, for vectors to WRKIT, then . . .

TAKEOFF RUNWAY 35: Climb on heading 349° or as assigned by ATC, for vectors to WRKIT, then . . .

. . . on track 080° to CHURN, then on track 085° to SNDR, then on transition. Maintain ATC assigned altitude.

- BLUMS TRANSITION (SNDR1.BLUMS)
- CAAGE TRANSITION (SNDR1.CAAGE)
- FFSSH TRANSITION (SNDR1.FFSSH)
- MOLLR TRANSITION (SNDR1.MOLLR)
- SEEDS TRANSITION (SNDR1.SEEDS)
- WEMAR TRANSITION (SNDR1.WEMAR)
- WHAEL TRANSITION (SNDR1.WHAEL)
- WYLSN TRANSITION (SNDR1.WYLSN)

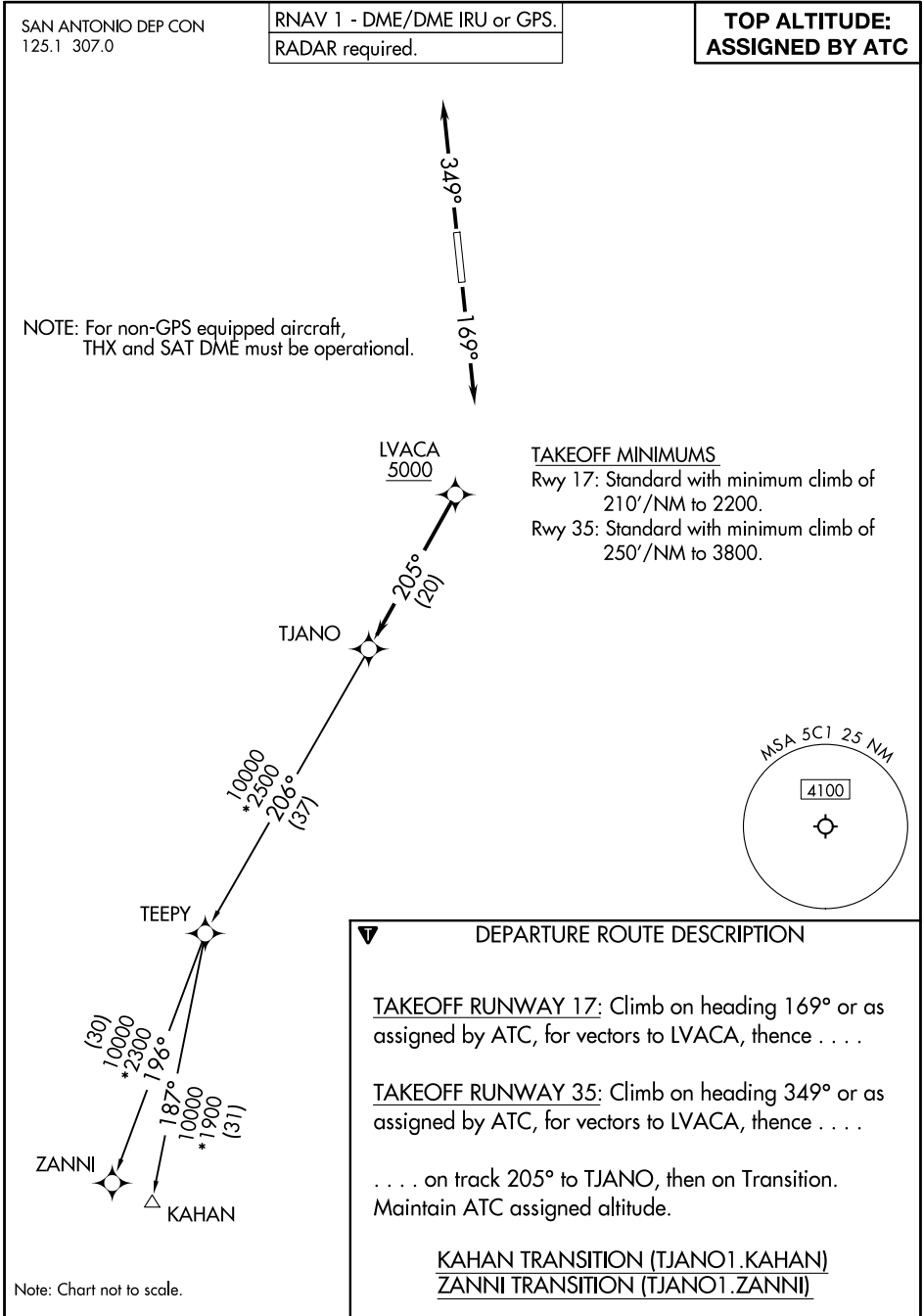


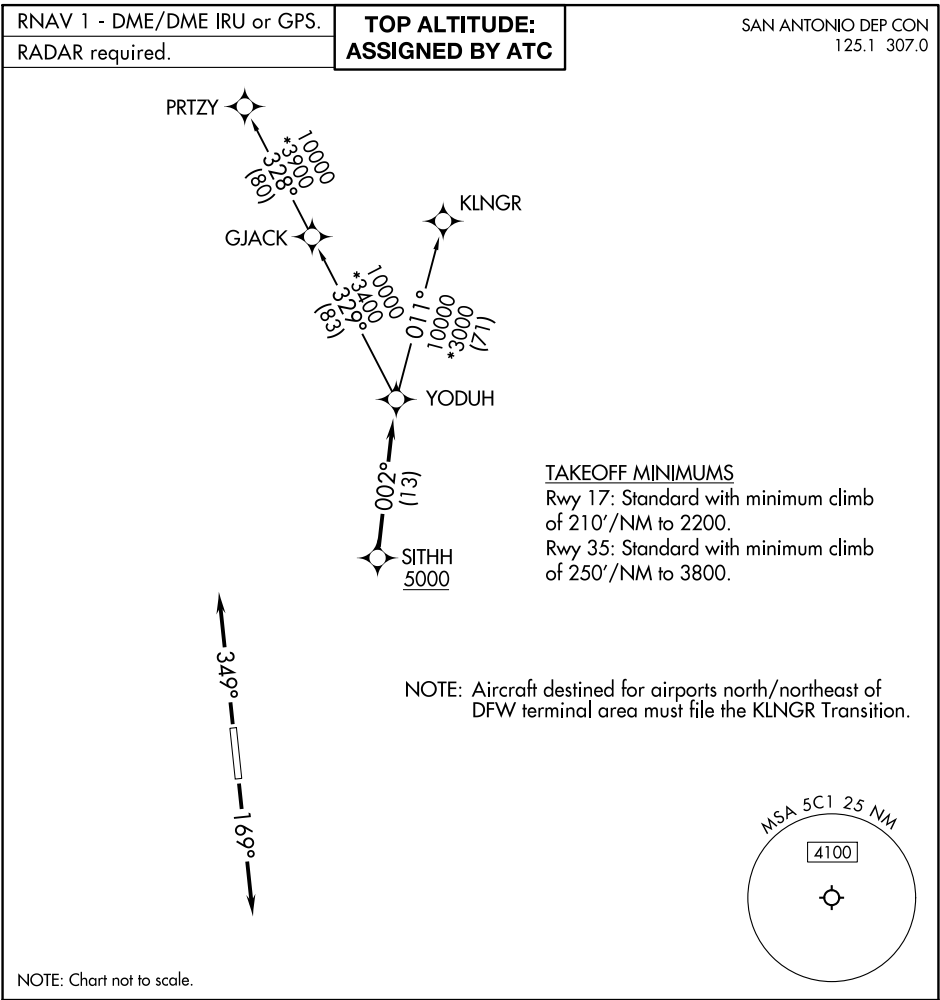
Note: Chart not to scale.

BOERNE STAGE AIRFIELD (5C1)
SAN ANTONIO, TEXAS

(SNDR1.SNDR) 24025
SNDR ONE DEPARTURE (RNAV) AL-10309 (FAA)

BOERNE STAGE AIRFIELD (5C1)
SAN ANTONIO, TEXAS





▼

DEPARTURE ROUTE DESCRIPTION

TAKEOFF RUNWAY 17: Climb on heading 169° or as assigned by ATC, for vectors to SITHH, thence . . .

TAKEOFF RUNWAY 35: Climb on heading 349° or as assigned by ATC, for vectors to SITHH, thence . . .

. . . on track 002° to YODUH, then on Transition. Maintain ATC assigned altitude.

KLNGR TRANSITION (YODUH1.KLNGR)

PRTZY TRANSITION (YODUH1.PRTZY)

SC-3, 22 FEB 2024 to 21 MAR 2024

SC-3, 22 FEB 2024 to 21 MAR 2024